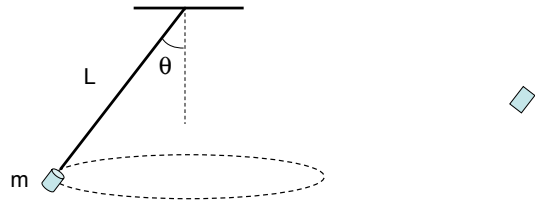


1.) Draw a f.b.d., then use NSL on the following situation:

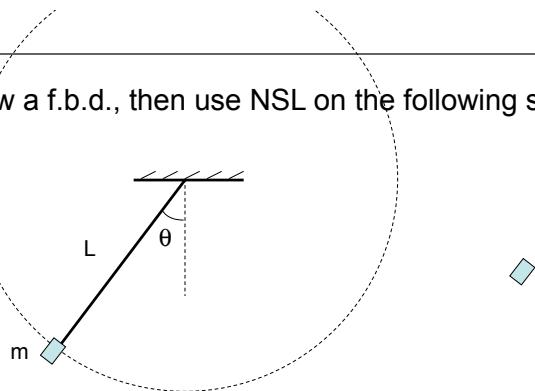


1.)

**THE KEY: FIND THE CENTER OF THE ARC UPON WHICH THE BODY IS MOVING. THE *CENTRIPETAL DIRECTION* WILL BE FROM THE BODY TO THAT CENTER!!!**

3.)

2.) Draw a f.b.d., then use NSL on the following situation:



2.)