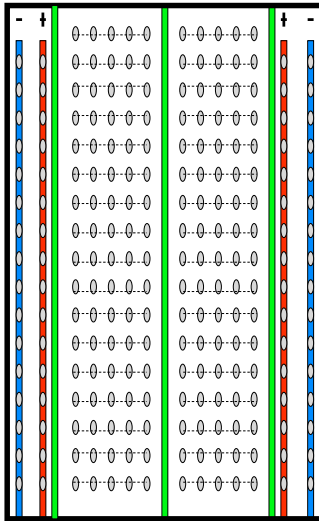
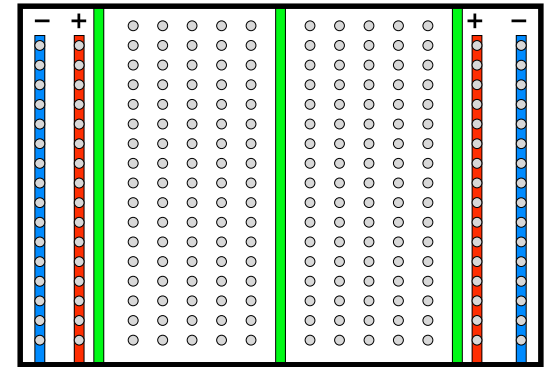


## BREAD BOARD CIRCUITS

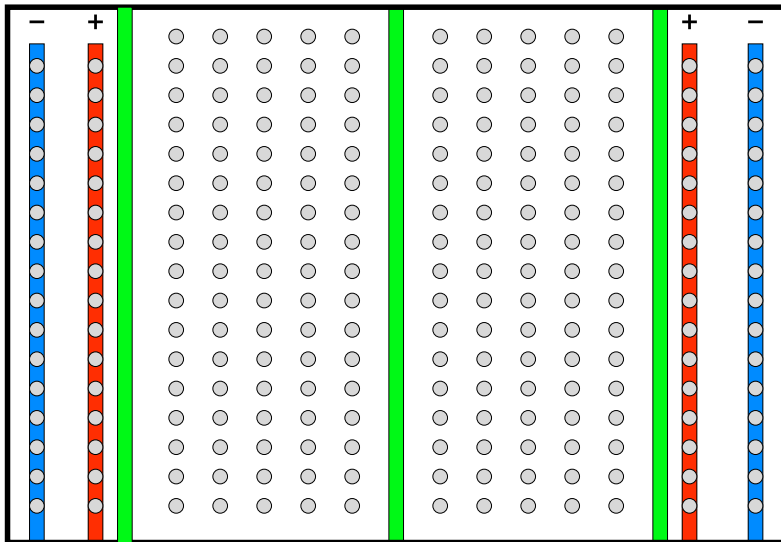


1.) Positive lead from a battery or solar cell should be connect to the + (red) terminal. Each hole along that vertical column will be connected to that + lead.

2.) Negative lead from a battery or solar cell should be connect to the - (blue) terminal. Each hole along that vertical column will be connected to that - lead.

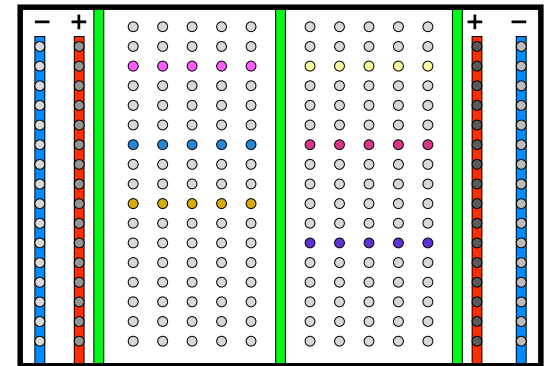


## BREAD BOARD CIRCUITS

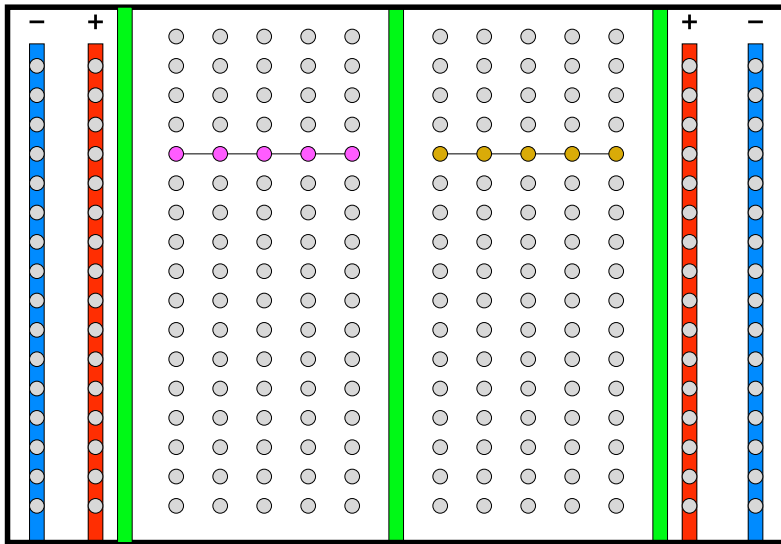


3.) The inner 5 holes in each row are connected to one another (I've color coded a few rows for clarity).

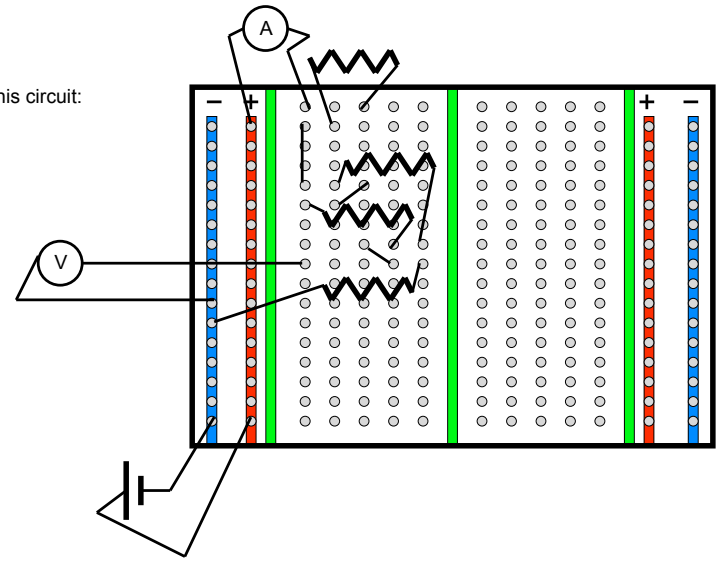
4.) Holes in a give row but on a different side of the green partition are NOT connected.



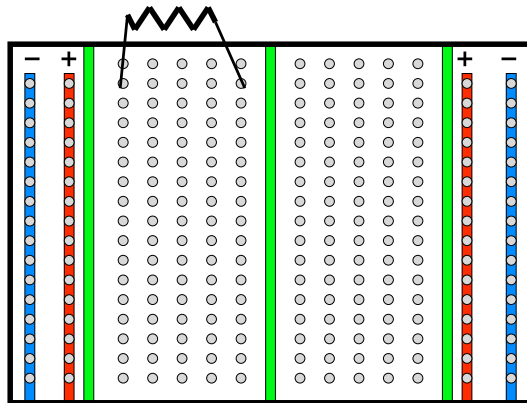
Holes in the same row but across the green boundaries are NOT connected.



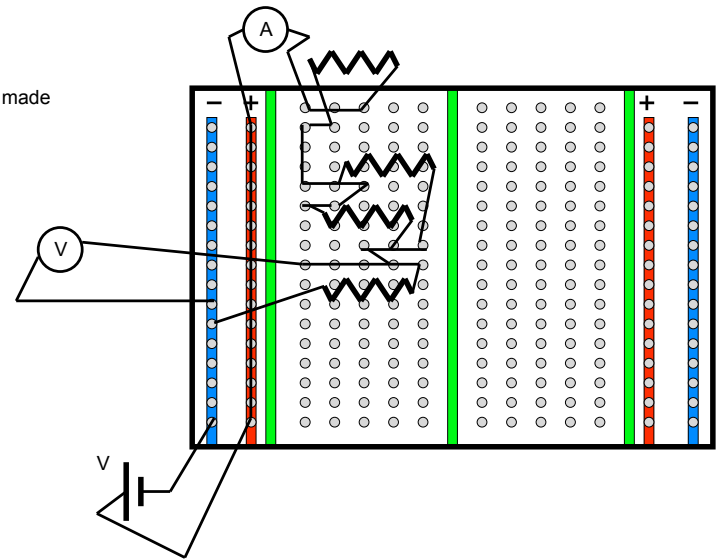
Decipher this circuit:

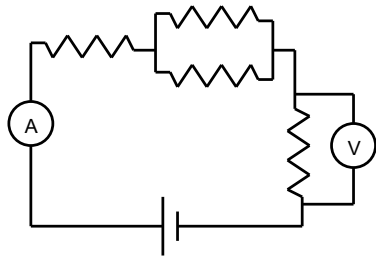
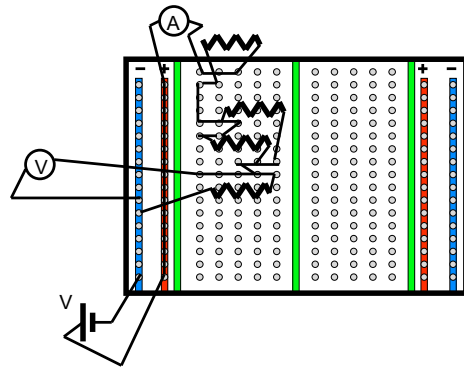


Decipher this circuit:

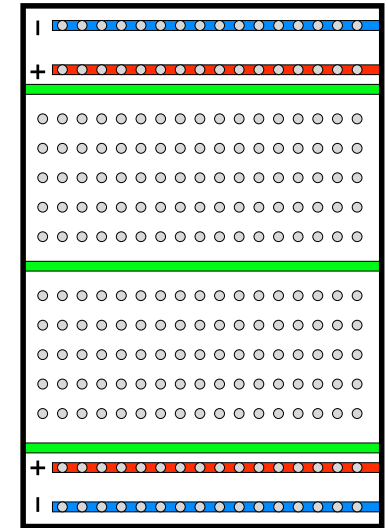
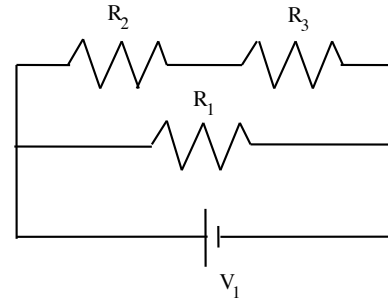


The circuit made complete:





So wire the circuit.



So wire the circuit.

